

Vedika

Instruments Pvt. Ltd

www.vedikainstruments.com

**Excellence with Reliable
Instrumentation Valves, Fittings & Accessories**



PRODUCTS OVERVIEW



COMPRESSION TUBE FITTINGS (DOUBLE FERRULES)

Tube To Male Pipe Thread



MALE CONNECTOR
MC



BULKHEAD MALE
CONNECTOR- BMC



MALE ELBOW
ME



MALE BRANCH
TEE- MBT



MALE RUN TEE
MRT

Tube To Male Pipe Thread



FEMALE CONNECTOR
FC



BULKHEAD FEMALE
CONNECTOR- BFC



FEMALE ELBOW
FE



FEMALE BRANCH
TEE- FBT



FEMALE RUN TEE
FRT

TUBE TO TUBE



UNION-U



BULKHEAD UNION
BU



UNION ELBOW
UE



UNION TEE
UT



UNION CROSS
UC

FRACTIONAL TUBING

: 1/8", 1/4", 5/16", 3/8", 1/2", 5/8", 3/4", 7/8", 1" in OD

METRIC TUBING

: 3, 6, 8, 10, 12, 14, 16, 18, 20, 22, 25 in mm

STANDARD THREAD

: BSP, NPT, BSPT, UNF, METRIC & OTHERS ON REQUEST

MATERIAL

: SS 304/316/316L/BRASS/INCONEL/MONEL/HAST-C & OTHERS ON REQUEST

INSTRUMENTATION PIPE FITTINGS



HEX NIPPLE



HEX LONG NIPPLE



HEX PLUG



ADAPTER



BUSH



COUPLING



MALE HOSE NIPPLE



FEMALE HOSE NIPPLE



PIPE NIPPLE



HEX COUPLING



FEMALE CAP



THREE PIECE UNION



FEMALE ELBOW



MALE ELBOW



ELBOW-MALE/FEMALE



TEE FEMALE



TEE MALE



CROSS FEMALE

CONNECTION
MATERIAL

: 1/8" TO 1" - NPT/BSP & OTHERS ON REQUEST

: SS 304/316/316L/BRASS/INCONEL/MONEL/HAST-C & OTHERS ON REQUEST

NEEDLE VALVES



OD X OD



MALE X FEMALE



FEMALE X FEMALE



ANGLE TYPE

MANIFOLD VALVES



2VM 'R' TYPE



2VM 'RM' TYPE



3VM 'R' TYPE



3VM 'T' TYPE



3VM 'H' TYPE



5VM 'R' TYPE



5VM 'T' TYPE



5VM 'H' TYPE

Gauge Valve



SINGLE PORT



MULTI PORT

Mono Flange Valve



1/2" TO 2" - 150# TO 2500#

PROCESS & INSTR. CONNECTION	: 1/4" TO 1" - NPT/BSP & OTHERS ON REQUEST
BODY MATERIAL	: SS 304/316/316L/BRASS/INCONEL/MONEL/ HAST-C & OTHERS ON REQUEST
MAX. WORKING PRESSURE	: 3000 PSI / 6000 PSI / 10000 PSI
OPTIONS	: OXYGEN SERVICE / NACE/PMI/TPI/GRAFOIL & PEAK PACKING

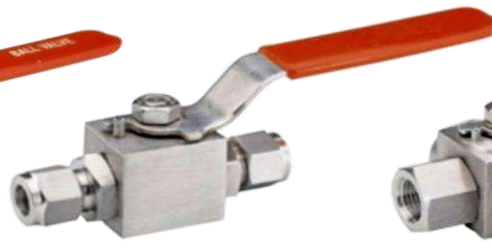
BALL VALVE



BAR STOCK BALL VALVE



HIGH PRESSURE BALL VALVE



BALL VALVE OD X OD



3 WAY BALL VALVE

PROCESS & INSTR. CONNECTION	: 1/4" TO 1" - NPT/BSP & OTHERS ON REQUEST
BODY MATERIAL	: SS 304/316/316L & OTHERS ON REQUEST
MAX. WORKING PRESSURE	: 2000 PSI / 6000 PSI AT 100°

PRESSURE GAUGE ACCESSORIES



SNUBBER



**GAUGE COCKS
1 WAY / 2 WAY**



**GAUGE COCKS
3 WAY**



GAUGE SAVER



**SYPHONE
(Q & U TYPE)**



SWIVEL ADAPTER



FIN TYPE



PERFORATED TYPE

COOLING TOWER

PROCESS & INSTR. CONNECTION	: 1/4" TO 1" - NPT/BSP & OTHERS ON REQUEST
BODY MATERIAL	: SS 304/316/316L/BRASS/INCONEL/MONEL/HAST-C & OTHERS ON REQUEST
MAX. WORKING PRESSURE	: (SNUBBER 3000 PSI /6000 PSI) & (Gauge Cock 1500 PSI)
SET PRESSURE	: GAUGE SAVER- 0.3 TO 400 bar
OPTIONS	: OXYGEN SERVICE / NACE/PMI/TPI

CHECK VALVE/NRV



PROCESS & INSTR. CONNECTION	: 1/4" TO 1" - NPT/BSP & OTHERS ON REQUEST
TUBE OD SIZE	: 1/8" TO 1" & 3MM TO 25MM
BODY MATERIAL	: SS 304/316/316L/BRASS/INCONEL/MONEL/HAST-C
MAX. WORKING PRESSURE	: 3000 PSI / 6000 PSI / 10000 PSI

THERMOWELL



THREADED



FLANGED



WELDED



SANITARY

CONNECTION	: 1/4" TO 1" - NPT/BSP & OTHERS ON REQUEST
FLANGE SIZE	: 1/2" TO 3" ANSI & DN25 TO DN100 DIN
PRESSURE RATING	: 150# TO 1500# ANSI & PN10 TO PN100
MATERIAL	: SS 304/316/316L/BRASS/INCONEL/MONEL/HAST-C & OTHERS ON REQUEST
OPTIONS	: NACE/PMI/TPI/X-RAY/CAP & CHAIN

DIAPHRAGM SEALS



MATERIAL : SS 304/316/316L/Inconel/Monel/Hast-C & Others On Request

DIAPHRAGM SEALS : Flanged, Threaded, Welded, Sanitary, DIN, Inline, Flushing Ring and Other Connections

INSTRUMENTATION HARDWARE

AIR HEADERS



HEADER PIPE SIZE
INLET

: 1" TO 4" (Seamless / ERW) Pipe / Sch- 40/ Sch- 80/ Sch- 160/C Class
: Flange (ANSI B 16.5) 1/2" TO 3" or Ball valve of size 1/4" to 2" or with Flange & Valve Both at inlet

OUTLET / DRAIN
TEST PRESSURE
MATERIAL

: Needle Valves / Ball Valves / Pipe Male- Female Open Threads
: Standard 20 kg/ cm.sq. (High Pressure Test offered)
: SS 304/316/316L/CS & Others on request

CONDENSATE/SEALPORT



PIPE SIZE
TYPE
PIPE THREAD END CONN.
SOCKET WELD PIPE SIZE
MATERIAL

: 1" TO 4" (Seamless / ERW) Pipe / Sch- 40 to Sch - XXS
: 3 Way / 4 Way
: 1/4" to 2 NPT / BSP & Others on request (up to 9000 PSI)
: 1/4" to 2" NB (up to 9000 PSI)
: SS 304/316/316L/CS/BRASS/INCONEL/MONEL/HAST-C & OTHERS ON REQUEST

PRESSURE - TEMPERATURE GAUGES / RTD - THERMOCOUPLE AUTOMATES & CNC PRECISION PARTS



Stem Blank, Neck, Bush, BT Cap, Movement Screw, Dial Screw, Socket, Gland assembly, Nipple Union Nipple, etc & Other as per Drawing

Testing Facilities :

- Hydrostatic Test Bench upto 20,000 PSI
- Pneumatic Test Bench upto 1400 PSI
- Bursting Strength Test
- Ultrasonic Test as per ASME Sec V article 4
- Dye Penetrate Test as per ASME Sec V article 6
- PMI Testing

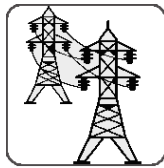
Industries We Cater



Oil & Gas



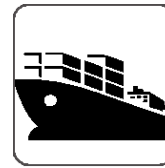
Chemical &
Pharmaceutical



Power Generation



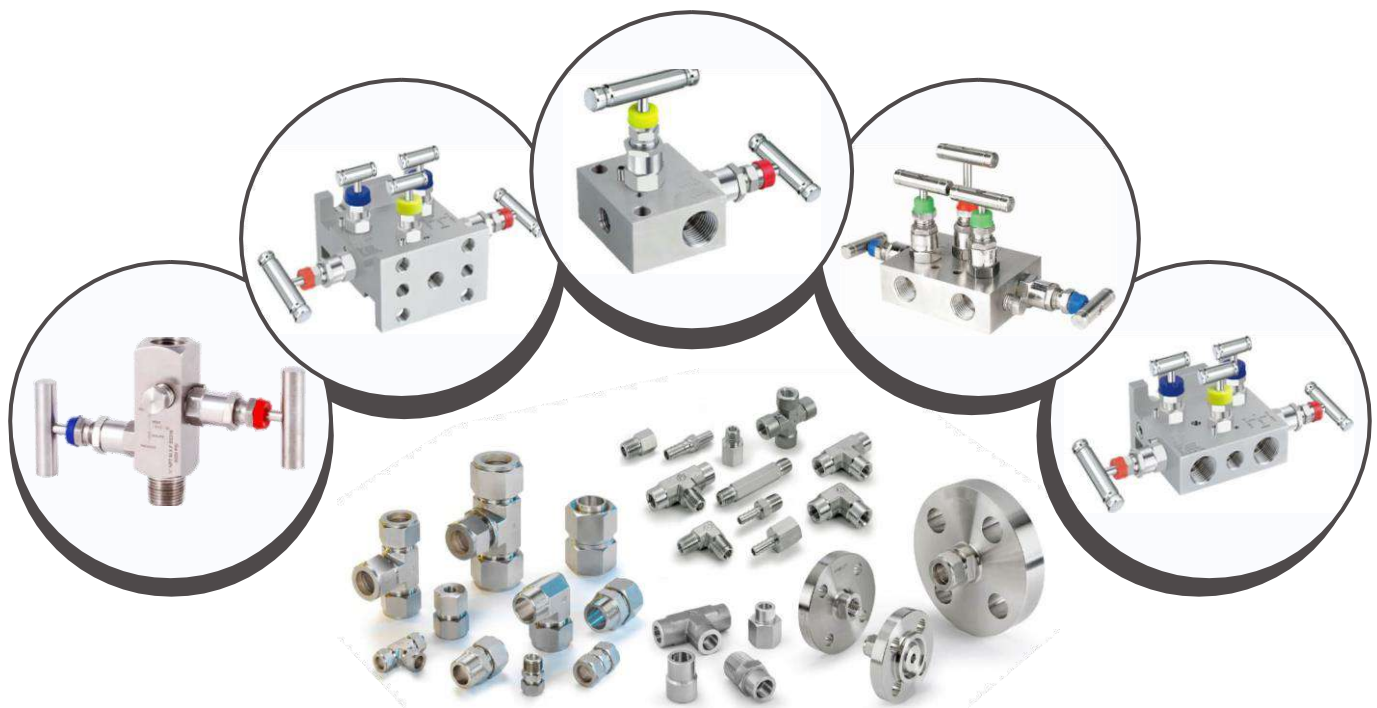
Petro Chemical



Shipping



Other Process
Industries



Vedika
Instruments Pvt. Ltd

+ 91 9810702836 | + 91 8287710277

0120-4011347

info@vedikainstruments.com
sales@vedikainstruments.com

www.vedikainstruments.com

Plot No. C-56/5, Mantec
Tower, Sec-62, Ta.: Noida,
Dist.: U. P., Noida - 201309.

Process Control Measuring Instruments and Sensors

Pressure, Temperature, Level & Flow
Sensors & Instruments
BMS Products

Automation Products
Instrumentation Panel
www.vedikainstruments.com